



**I.T. Unicode Sdn. Bhd.** (561830-D)

153A, Persiaran Pegaga,

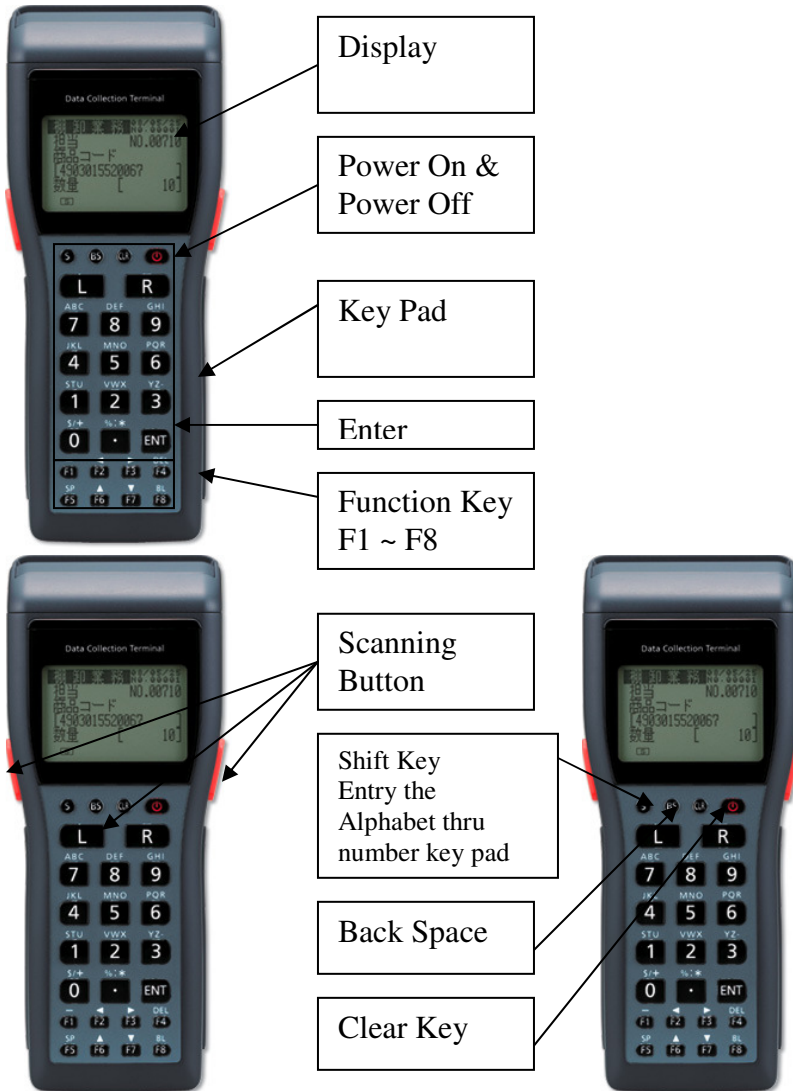
Taman Bayu Perdana, 41200 Klang, Selangor, West Mal

Tel: 03-33248168 Fax: 03-33240301

[www.unicode.com.my](http://www.unicode.com.my) [it@unicode.com.my](mailto:it@unicode.com.my)

# Operation Instruction of DT930 Application Installation

## Key pad introduction



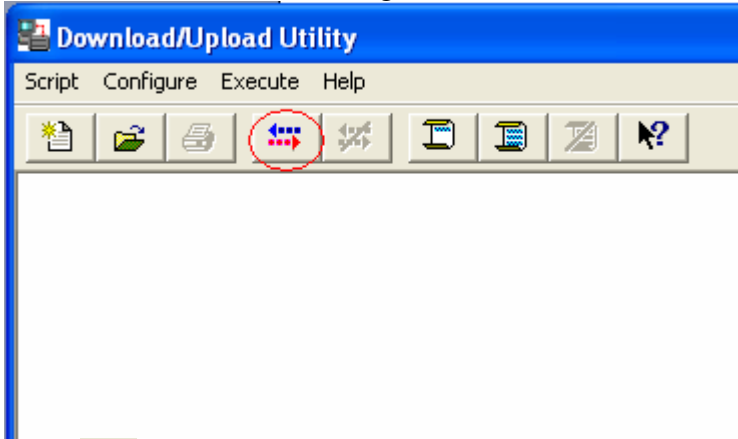
## **RESET DT930 To OS System Menu**


To install DT930 Program, LMWin & DT930 Both must be ready.

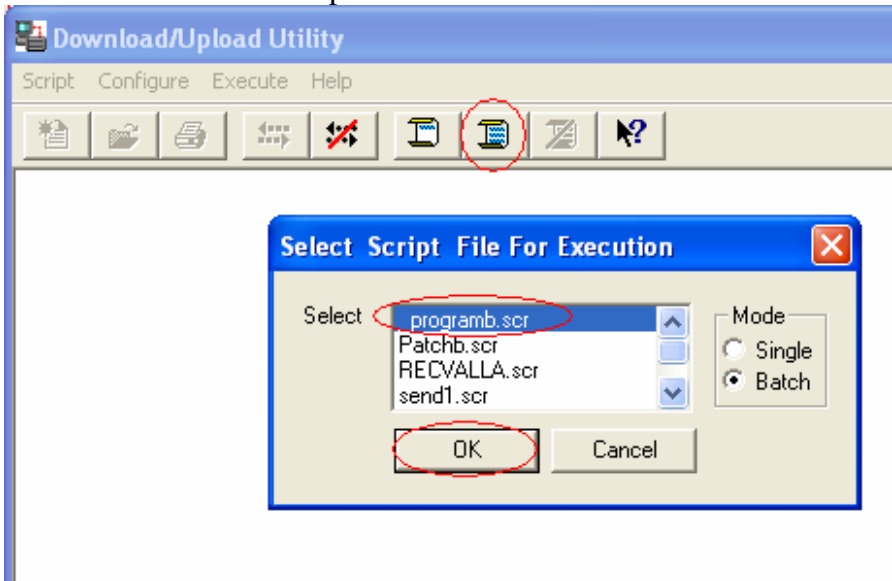
- **Step 1 : Setup LMWIN Software in Computer**
- **Step 2 : Open the DT930 System Menu Step 3 :**
- **Step 3 : Set File Mode (for new Device only)**
- **Step 4 : Transfer Program into DT930 Device**

# Step 1 : Setup LMWIN Software in Computer Configuration setting of Computer

Press  to start Link Manager.



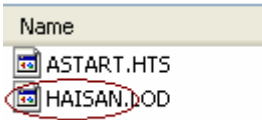
Press  to execute script command. Follow as below.



Click [OK] to confirm.

## **DT930 Program files.**

Make sure the DT930 Program is store in location  
C:\DT930\Program\  
The file at least content 2 files.



Eg.  
the extension must be .LOD .

, the filename can be different but

## **Step 2 : Set DT930 File Mode (for new Device only)**

Please

Press [4].UTILITY

Will appear

```
TRANSMIT

1:SEND FILE
2:RECEIVE FILE
3:FORMAT DRIVE
4:CHG MEM SIZE
5:FILE MODE
```

Will appear

```
FILE MODE

1:NORMAL MODE
2:DT700  MODE
```

Press [2]. DT700 MODE

```
DRV TO FORMAT
A DRIVE

|***.....|020%
```

Press [CLR]. 3 TIMES, BACK TO TRANSMIT SCREEN.

## **Step 1 : Open the DT930 System Menu**

The following will describe the DT930 part.

1. Make sure DT930 is in Power Off mode.
2. Hold down the [S] & [.] then press [PW] button. (Press 3 button at the same time.)

If reset successfully, you will see the following screen.

```
SYSTEM MENU

1:EXECUTE AP
2:SET MODE
3:DATE/TIME
4:TRANSMIT
5:VERSION
```

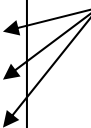
Press [4].TRANSMIT,  
Will appear

```
TRANSMIT
1:MULTI INSTALL
2:AP INSTALL
3:DUPLICATE HT
4:UTILITY
5:PROTOCOL   FLNK
6:PORT       SIR
7:SPEED      115K
```

### Step 3 : Set Communication Setting

TRANSMIT SCREEN ( **Setting for using USB Cradle IO Box**)

TRANSMIT 1: MULTI INSTALL 2: AP INSTALL 3: DUPLICATE HT 4: UTILITY 5: PROTOCOL <b>FLNK</b> 6: PORT <b>FIR</b> 7: SPEED <b>4M</b>	<b>Press button:</b> <b>[6],[2],[ENT]</b>
---	--



## **Step 4 : Transfer Program into DT930 Device**

Press **[4]** UTILITY

Press **[1]** TRANS FILE

```
TRANSFER FILE
RECEIVE (IR)
```

### **RECEIVING SCREEN**

```
TRANSFER FILE
RECEIVE (IR)
  KOSSAN.LOD

                                02%
| ** ..... |
```

### **Run the program**

Press **[CLR]** , **[CLR]**

Press **[1]** EXECUTE AP

Press **[ENT]**

Program will executed, the main will vary by program.